



Highlights

- Benefit from BI and reporting capabilities running natively on IBM Power Systems™ with IBM i
 - Modernize traditional ERP reporting with intuitive browser-based tools
 - Easily deploy dashboards, analytical reports, or integrate data with spreadsheets
 - Hide complexity of accessing JD Edwards EnterpriseOne and JD Edwards World databases from end users and report authors
 - Improve performance of queries by leveraging advanced IBM DB2® for i query optimization features
 - Reduce and simplify IT support efforts with installation and maintenance all in one instance of IBM i
-

IBM DB2 Web Query for i Integrated with Oracle's JD Edwards Applications

Easy to use, powerful JD Edwards EnterpriseOne and JD Edwards World database queries on the IBM i platform

Business Intelligence (BI) is a broad term relating to applications designed to analyze data for purposes of understanding and acting on the key metrics that drive profitability in an enterprise. Key to analyzing that data is providing fast, easy access to it while delivering it in formats or tools that best fit the needs of the end user.

At the core of any business intelligence solution are end user query and reporting tools that provide intuitive access to data supporting a spectrum of end users from executives to “power users,” from spreadsheet aficionados to the external Internet consumer.

Companies worldwide invest millions of dollars in ERP solutions to improve the way they conduct business. While ERP systems provide significant benefits, clients often struggle to meet the needs of various users with reporting systems accessing data in those operational databases. This leads to a high degree of dependency on IT for building reports to cater to the individual requirements of each user.

DB2 Web Query for i

IBM DB2 Web Query for i provides a set of efficient and flexible web-based tools for a robust, extensible, and productive operational reporting solution with no programming required. With the JD Edwards EnterpriseOne and World integration component, clients can leverage DB2 Web Query to deliver data to the users that need it, when they need it, and in the formats they want!



IBM Systems and Technology Group
Power Systems

DB2 Web Query provides the ability to query or build reports against data stored in DB2 for i databases through browser-based user interface technologies. Clients can build new reports with ease through the very intuitive, ribbon-based authoring tool called InfoAssist. Building reports from JD Edwards EnterpriseOne and World databases is simplified through metadata and business views that eliminate the need to be a database expert.

DB2 Web Query for i provides a self service reporting environment that allows end users to run reports delivering data in many different formats, including spreadsheets, PDFs, or data that can be viewed directly from a browser or customized application. In addition, end users can interact with the data through slicing and dicing and drill-down capabilities by using an OLAP (On-Line Analytical Processing) report.

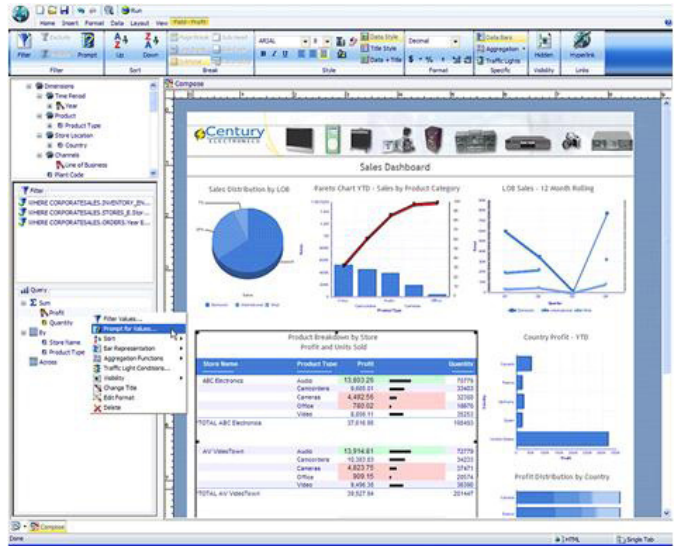


Figure 1: InfoAssist Report Authoring Tool

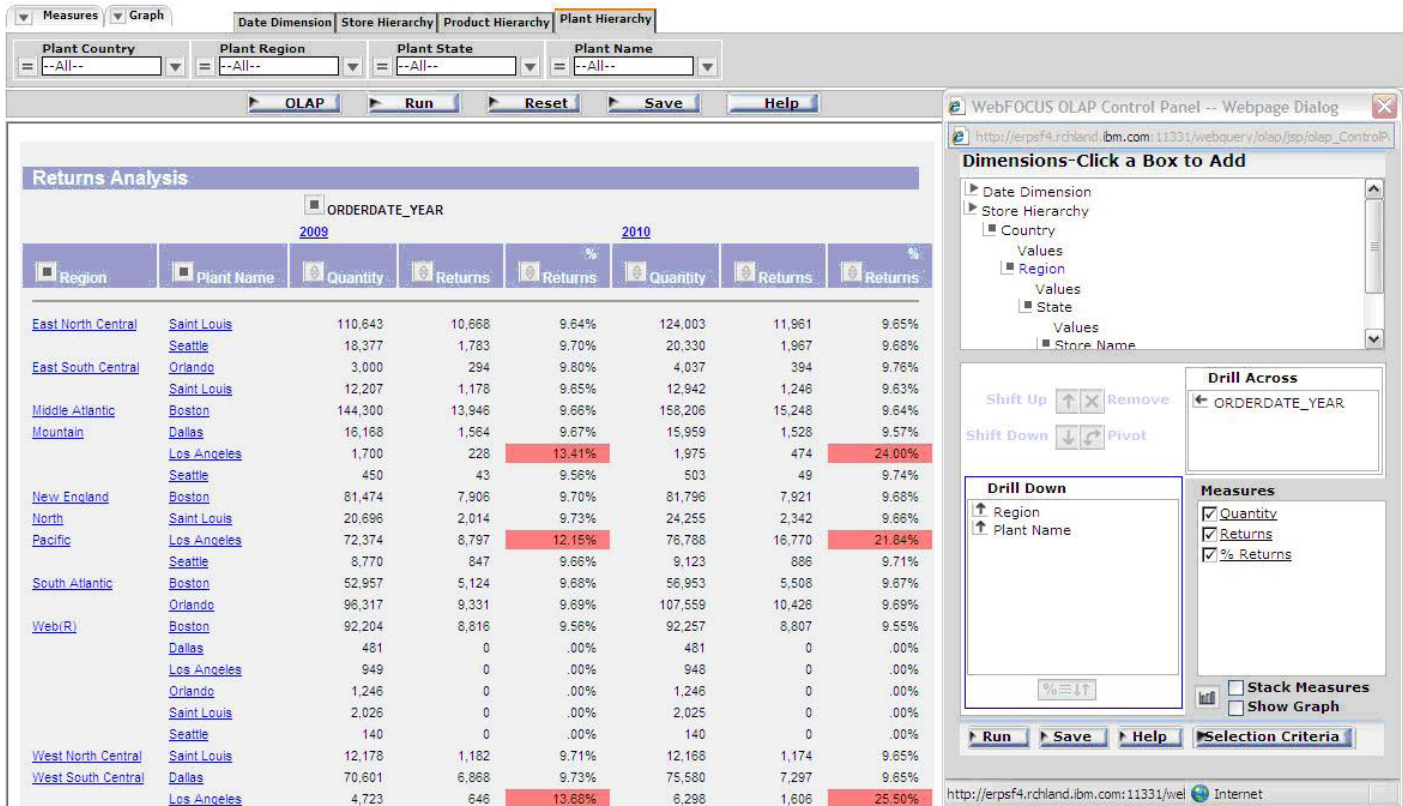


Figure 2: Sample DB2 Web Query OLAP report

End users on the go can leverage Active Technology features to analyze data without having to be connected to the server. Executives can monitor key performance indicators (KPI) through dashboards or compound reports where you can view multiple key data points in a single view.

Reports created with DB2 Web Query can then be distributed through e-mail automatically, or the reports can be run in batch mode and saved for later viewing through job scheduling functions.

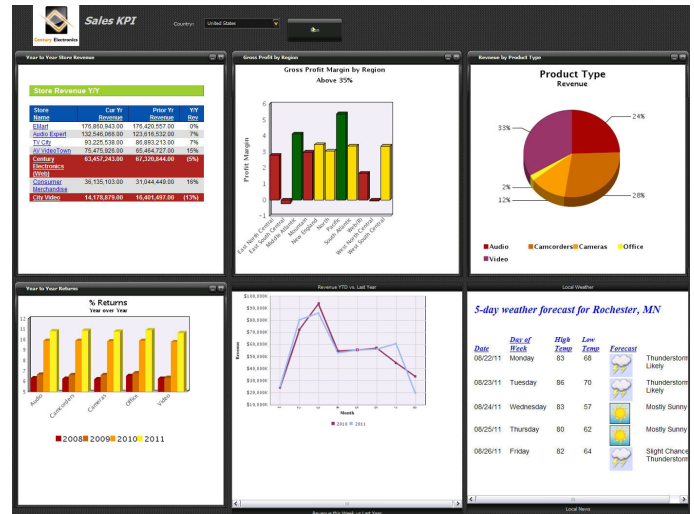


Figure 3: Sample DB2 Web Query KPI dashboard

Feature	Benefits
Integrated with JD Edwards World and JD Edwards EnterpriseOne databases running on IBM i	<ul style="list-style-type: none"> Handles decimal and date conversions automatically. Provides meaningful column names. Adheres to JD Edwards application security model.
Parameter driven reports	<ul style="list-style-type: none"> Simplify the management of reports. Reduce the number of report definitions required.
Import Query/400 definitions	<ul style="list-style-type: none"> Leverage existing Query/400 investment. Easily transition to the latest technology.
Automated relationship recognition	<ul style="list-style-type: none"> Make it much easier for end users to understand the data without having to worry about how to join multiple tables or interpret date fields.
Single server-based code installation	<ul style="list-style-type: none"> Lower installation costs—no client software needs to be loaded. Lower maintenance costs—upgrades, patches need only be installed on the server.
DB2 for i features	<ul style="list-style-type: none"> Increase productivity and security with enhancements in the DB2 for i database engine.
Meta Data Layer	<ul style="list-style-type: none"> Increase productivity of report authors and standardize data meaning across the enterprise.

Table 1: DB2 Web Query features and benefits

Modernize traditional ERP reporting environments

DB2 Web Query goes way beyond traditional JD Edwards EnterpriseOne and JD Edwards World reporting solutions such as FASTR, Dream Writer or World Writer. DB2 Web Query provides advanced charting, parameterization, and OLAP-like slicing and dicing. Take advantage of the ability to deploy interactive dashboards or support users on the go with mobile computing options.

Hide complexity of data from report “authors” and end users

One of the biggest challenges with querying ERP databases is digging out the hidden meaning that is buried in the ERP database model and data dictionary. With the DB2 Web Query integration with JD Edwards EnterpriseOne and World databases you can shield those complexities, standardize data attributes such as default formatting of date or monetary fields, and preserve who is authorized to view the data through the ERP system security model.

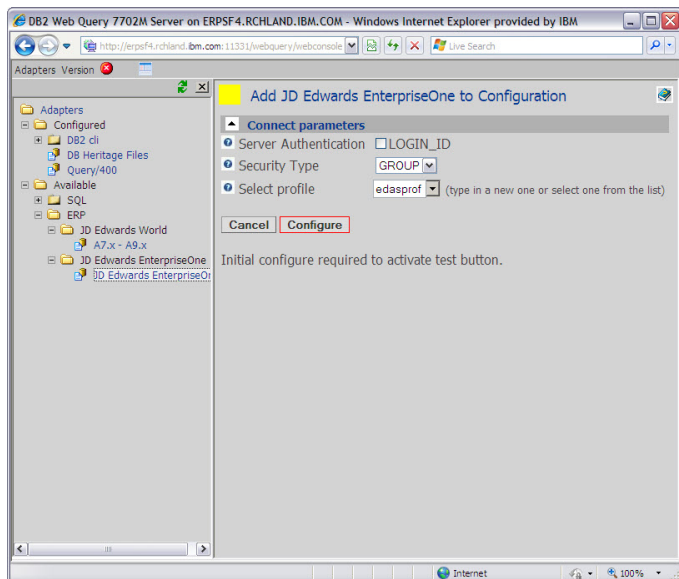


Figure 4: Configuring the JD Edwards EnterpriseOne Adapter

DB2 Web Query automatically handles decimal and date conversions, provides meaningful column names, and simplifies the data to report authors and end users. Enhance the metadata to define multi-dimensional relationships for OLAP processing or build derived fields that are standardized for every report.

Improve performance and simplify management of the reporting environment

IBM has spent over a decade building features into DB2 for i for improved query performance and simplified management, including many functions automated by DB2 for i when processing queries. The DB2 for i SQL Query Engine (SQE) can improve performance over five times from the previously available optimizer technology (referred to as CQE). The ability to create and store aggregate (summary) data in DB2 can provide huge benefits in processing the types of requests typical in a reporting environment where analysts want to view summarized data and then drill into detail level data. The On Demand Performance Center simplifies the ability for an administrator to understand how DB2 is processing queries and provides advice on steps to take to improve runtime performance.

Reduce IT support efforts – keep the data in DB2 for i

The single server-based code installation and thin client implementation of DB2 Web Query offers the following potential benefits:

- Lower installation costs—no client software needs to be loaded.
- Lower maintenance costs—upgrades, patches need only be installed on the server.
- Simplified performance analysis.
- Simplified backup and archive through integration with IBM i policies and procedures.
- Secured reporting environment leveraging existing IBM i and ERP security models.

Many enterprise reporting tools on the market force you to move your data out of DB2 and require multiple servers to support various reporting functions. DB2 Web Query is an IBM i server-based and thin client implementation, simplifying the whole reporting infrastructure for iSeries®, System i® and IBM i clients. Software upgrades are simplified, reliability can be increased, network traffic is reduced, and security and auditing may be simplified.

Through the single server installation, DB2 Web Query provides the ability to pull data from remote DB2 for i databases or Microsoft® SQL Server databases into a single report. You can avoid complex data replication by leaving the data where it is and report on it as needed. Whether it's across systems or across partitions, DB2 Web Query can be installed in a single OS image and access these remote databases.

Become productive with little training

IBM's DB2 for i Center of Excellence team of consultants and trainers offer "getting started" services that will jump start your implementation in as little as three days. The "getting started" offering provides skills transfer and "best practices" guidance through a combination of presentations, demonstrations, hands-on labs and facilitated workshops that cover everything you need to know to be productive in a matter of days!

The IBM and Oracle alliance

Since 1986, IBM and Oracle have partnered to create smart, serious innovation that's helping to shift the world. More than 140,000 joint clients benefit from the strength and stability of the Oracle and IBM alliance, which offers technology, applications, services, and hardware solutions that mitigate risk, boost efficiency, and lower total cost of ownership.

IBM and Oracle continually enhance the alliance to ensure they are helping companies respond quickly to constantly shifting market conditions and client demands. This is accomplished through the delivery of industry-specific hardware and software solutions, optimized to the client's environment.

JD Edwards EnterpriseOne

JD Edwards EnterpriseOne is an integrated applications suite of comprehensive enterprise resource planning (ERP) software. that combines business value, standards-based technology and deep industry experience into a business solution with a low total cost of ownership (TCO). JD Edwards EnterpriseOne offers you a choice of 70 application modules to support a diverse set of business operations with one common database for a single, consistent version of your data. JD Edwards EnterpriseOne grows and expands with your business, thanks to its underlying architecture. Flexible and scalable, its one toolset design is built with open standards.

JD Edwards World: A full range of solutions to meet your needs

Regardless of how you do business today or how you plan to do business tomorrow, JD Edwards World offers the flexible, comprehensive functionality you need. JD Edwards World pioneered the concept of enterprise integration. Today it continues to streamline the flow of information and materials between departments and locations in businesses everywhere. It helps you manage plants, inventories, equipment, finances, and people as a synchronized, integrated whole. JD Edwards World also provides a single version of management information so that you can build consensus within your business to better anticipate the trends in your market and the needs of your customers.

For more information

To learn more about joint solutions from IBM and Oracle, contact your IBM representative or IBM Business Partner at 1-866-426-9989, or visit:

ibm.com/solutions/oracle

For more information about IBM DB2 Web Query for i, visit:

ibm.com/systems/i/software/db2/webquery

For more information about JD Edwards EnterpriseOne, visit:

www.oracle.com/us/products/applications/jd-edwards-enterpriseone/index.html

For more information about JD Edwards World, visit:

www.oracle.com/us/products/applications/jd-edwards-world/index.html



© Copyright IBM Corporation 2011

IBM Corporation
Integrated Marketing Communications
Systems & Technology Group
Route 100
Somers, NY 10589

Published in the United States of America
September 2011
All Rights Reserved

IBM, the IBM logo, DB2, iSeries, Power Systems and System i are trademarks or registered trademarks of International Business Machines Corporation in the United States, other countries, or both. A current list of IBM trademarks is available on the Web at: ibm.com/legal/copytrade.shtml

Microsoft and Windows are trademarks of Microsoft Corporation in the United States, other countries, or both.

Other trademarks and registered trademarks are the properties of their respective companies.

References in this publication to IBM products or services do not imply that IBM intends to make them available in every country in which IBM operates.

This information may be subject to change without notice. Consult your local IBM business contact for information on the products, features and services available in your area.

All statements regarding IBM future directions and intent are subject to change or withdrawal without notice and represent goals and objectives only.

Information concerning non-IBM products was obtained from the suppliers of those products or other public sources. Questions on the capabilities of the non-IBM products should be addressed with those suppliers.



Please Recycle